

# Simmons Place



HK HOMES LLC.

*Live in Your Dream!*



**NOW  
PRESELLING!**



**New Home Community  
From the Mid to High**

**\$100's!**

**Located in Clayton County:** From I-75, take the Jonesboro Rd exit, travel west on Jonesboro Rd until dead end, take right and immediate left onto Tara Blvd (Hwy 19/41), turn right onto Lovejoy Rd (just past WalMart), Simmons Place will be on the left!



Call us for more information on this  
Community of Distinction!

**Janice McGowan**  
**770-362-7674**



# Simmons Place



HK HOMES LLC.

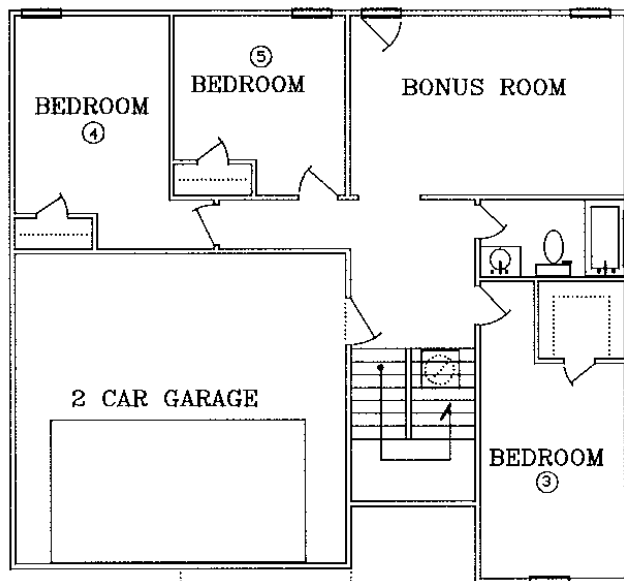
Live in Your Dream!

## The Cimarron

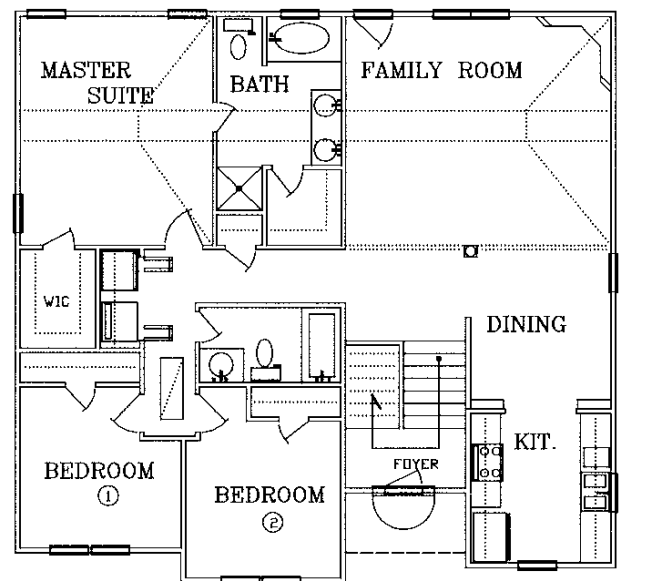
- 6 Bedroom, 3 full Baths
- Spacious Family Room with Deluxe Fireplace
- Large Kitchen with Dining Area
- Bonus Room on First Floor
- Second Story Laundry Room
- Luxury Master Suite with Elegant Master Bath
- Cathedral Ceilings in Master and Family Room
- Attached Two Car Garage



\*Approx. 2912 sq. ft. under roof



First Floor



Second Floor



Call us for more information on this  
Community of Distinction!

**Janice McGowan**  
**770-362-7674**



This is an artist's rendering only. Not to be mistaken for a blueprint. Optional features shown may not be included in actual property. The listing broker does not guarantee the information describing the property. Interested parties are advised to independently verify this information through personal inspection or with the appropriate professionals. Offer is subject to errors, omissions, changes and withdrawals without notice.

# Simmons Place



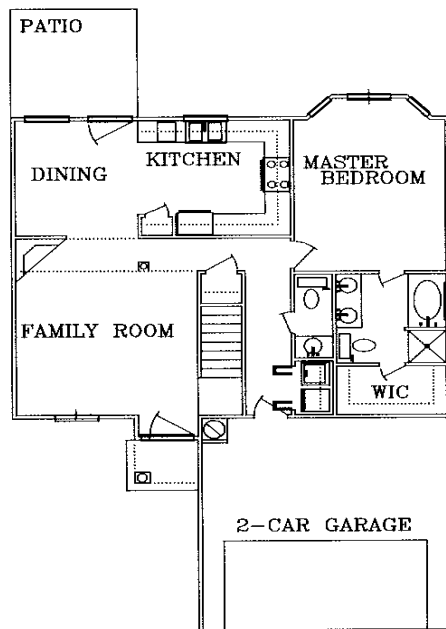
HK HOMES LLC.  
Live in Your Dream!

## The Spencer

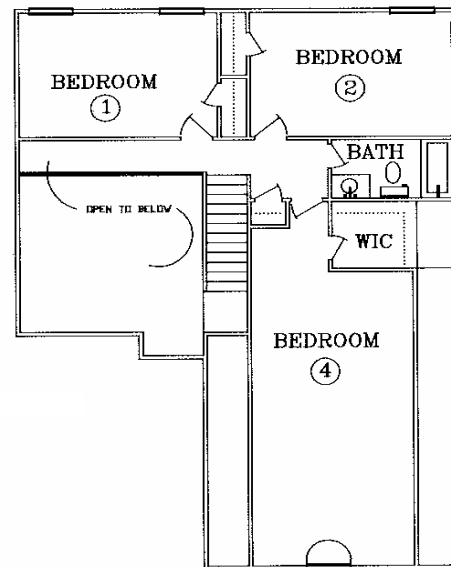
- 4 Bedroom, 2.5 Baths
- Spacious Family Room with Deluxe Fireplace
- Large Kitchen with Dining Area
- Patio off of Kitchen
- Open Floorplan
- Luxury Master Suite with Trey Ceilings and Sitting Area
- Attached Two Car Garage



\*Approx. 2775 sq. ft. under roof



First Floor



Second Floor



Call us for more information on this  
Community of Distinction!

**Janice McGowan**  
770-362-7674



This is an artist's rendering only. Not to be mistaken for a blueprint. Optional features shown may not be included in actual property. The listing broker does not guarantee the information describing the property. Interested parties are advised to independently verify this information through personal inspection or with the appropriate professionals. Offer is subject to errors, omissions, changes and withdrawals without notice.

# Simmons Place



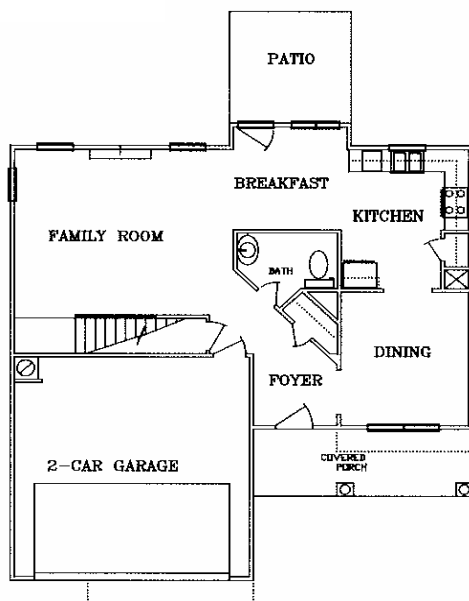
HK HOMES LLC.  
Live in Your Dream!

## The Stallion

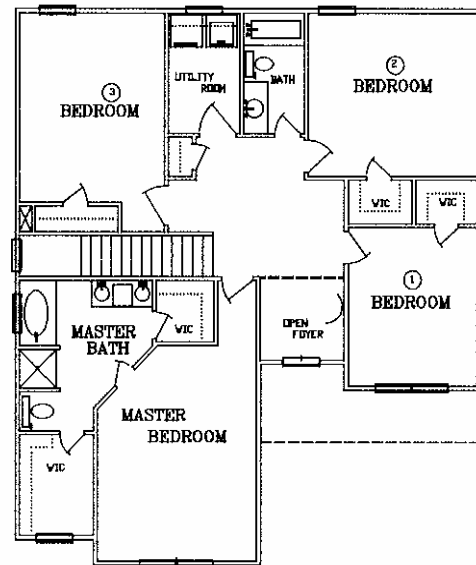
- 4 Bedroom, 2.5 Baths
- Spacious Family Room with Deluxe Fireplace
- Large Kitchen with Breakfast Area
- Patio off of Kitchen
- Wonderful Open Floor Plan
- Luxury Master Suite with His/Hers Closets
- Attached Two Car Garage



\*Approx. 2624 sq. ft. under roof



First Floor



Second Floor



Call us for more information on this  
Community of Distinction!

**Janice McGowan**  
770-362-7674



This is an artist's rendering only. Not to be mistaken for a blueprint. Optional features shown may not be included in actual property. The listing broker does not guarantee the information describing the property. Interested parties are advised to independently verify this information through personal inspection or with the appropriate professionals. Offer is subject to errors, omissions, changes and withdrawals without notice.

# Simmons Place



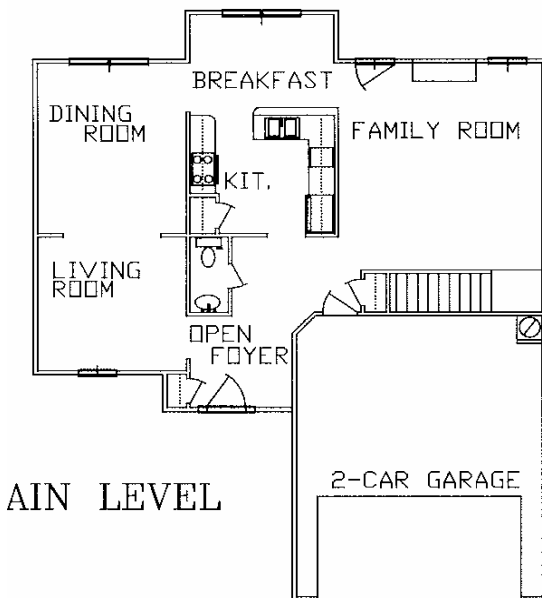
HK HOMES LLC.  
Live in Your Dream!

## The Stampede

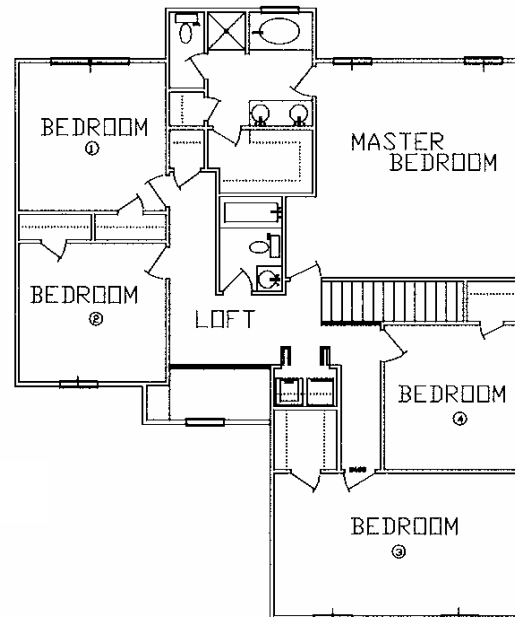
- 5 Bedroom, 2.5 Baths
- Spacious Family Room with Deluxe Fireplace
- Open Kitchen with Breakfast Area
- Formal Dining Room
- Loft Area Upstairs
- Luxury Master Suite with Huge Master Bath
- Attached Two Car Garage



\*Approx. 2982 sq. ft. under roof



First Floor



Call us for more information on this  
Community of Distinction!

**Janice McGowan**  
**770-362-7674**



# Simmons Place



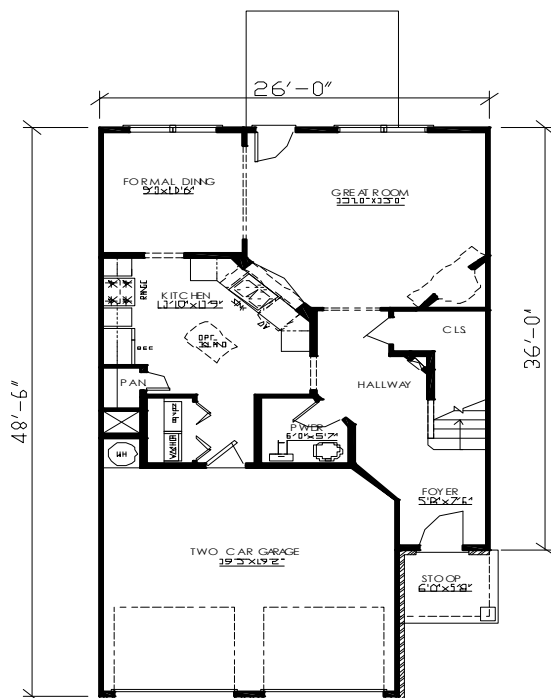
HK HOMES LLC.  
Live in Your Dream!

## The Palmetta

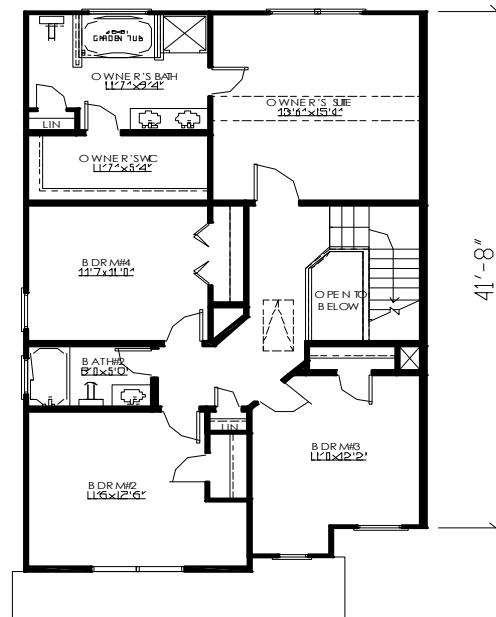
- 4 Bedroom, 2.5 Baths
- Two Car Garage with Carriage Doors
- Vaulted Ceilings in Master Suite
- Spacious Kitchen
- Two Story Foyer
- Garden Tub with Separate Shower in Master Bath



\*Approx. 2371 sq. ft. under roof



First Floor



Second Floor



Call us for more information on this  
Community of Distinction!

**Janice McGowan**  
770-362-7674



This is an artist's rendering only. Not to be mistaken for a blueprint. Optional features shown may not be included in actual property. The listing broker does not guarantee the information describing the property. Interested parties are advised to independently verify this information through personal inspection or with the appropriate professionals. Offer is subject to errors, omissions, changes and withdrawals without notice.

# Simmons Place



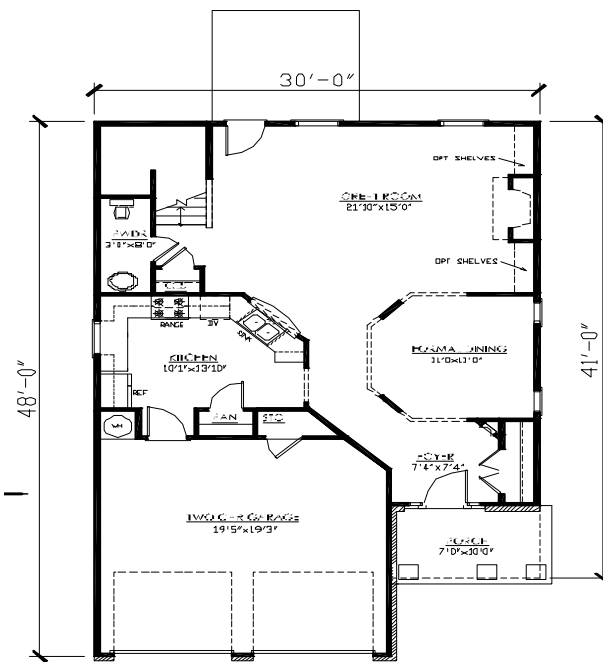
HK HOMES LLC.  
Live in Your Dream!

## The Melrose

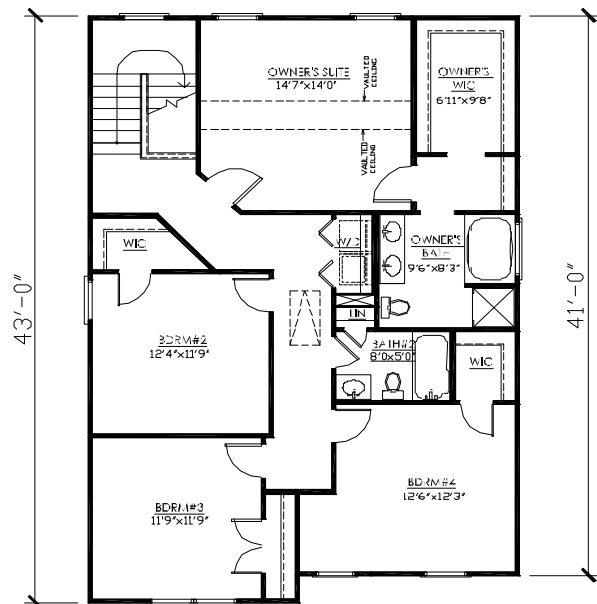
- 4 Bedroom, 2.5 Baths
- Two Car Garage with Carriage Doors
- Dual Vanity in Master Bath
- Great Open Floor Plan
- Extra Closet Space
- Covered Front Porch
- Beautiful Formal Dining Room



\*Approx. 2629 sq. ft. under roof



First Floor



Second Floor



Call us for more information on this  
Community of Distinction!

**Janice McGowan**  
770-362-7674



This is an artist's rendering only. Not to be mistaken for a blueprint. Optional features shown may not be included in actual property. The listing broker does not guarantee the information describing the property. Interested parties are advised to independently verify this information through personal inspection or with the appropriate professionals. Offer is subject to errors, omissions, changes and withdrawals without notice.